

# FISHING REPORT NUMBER 18

8/23/2012



**YOU CAN FIND US DIRECTLY ON FACEBOOK.** This page features a variety of information on fishing, hunting, and wildlife watching in Connecticut. The address is [www.facebook.com/CTFishandWildlife](http://www.facebook.com/CTFishandWildlife).

## INLAND REPORT

**LARGEMOUTH BASS** fishing has been good and night fishing continues to produce. Try black jitterbugs and surface poppers. Places to try for bass include Lake Lillinonah, Highland Lake, Lake Hayward, Candlewood Lake, Black Pond (Middlefield), Bantam Lake, Halls Pond, Rogers Lake, Pequonnock River, Stillwater Pond, Rogers Lake, Wononskopomuc Lake (30 fish for 2 anglers), Beach Pond (catches include a 5.85 lb bass), Gardner Lake, Coventry Lake, Aspinook Pond, Lake Saltonstall, Lake McDonough, Moodus Reservoir, Beseck Lake, Dooley Pond, Hopeville Pond, Mamanasco Lake, Ball Pond, West Thompson Lake, Winchester Lake, Coventry Lake, Cedar Lake, Stateline Pond, Halls Pond, Mansfield Hollow Reservoir, Bishop Swamp, Dog Pond, Hatch Pond, Mudge Pond, Griggs Pond, Roseland Lake and Pachaug Pond. **Tournament reports** are from Mansfield Hollow Reservoir (very good), Pachaug Pond (steady, with a number of 3 lb bass and a 4 lbunker), Candlewood Lake (fair), Aspinook Pond (fair, with a 5.7 lbunker), Winchester Lake (plenty of action with lots of “shorts” and a 5 lbunker) and Lake Lillinonah (fair).

**SHARE THE EXPERIENCE**  
Take someone fishing

**SMALLMOUTH BASS** action reported from Lake McDonough, Colebrook Reservoir (difficult to launch, try the exposed bridge), Highland Lake, Bantam Lake, Lake Housatonic, Candlewood Lake (on the humps), Coventry Lake, Lake Lillinonah and Bantam Lake. River smallie action continues to be good, with reports from the Quinebaug River, Naugatuck River, Farmington River (Tarrifville) and Housatonic River (very good here).

**Tournament reports** are from Pachaug Pond (bags continue to include some smallies, including a 3 lb bass), Gardner Lake (a few smallmouth among the bags), Lake Lillinonah (fair) and Candlewood Lake (has slowed some).

**NORTHERN PIKE** are reported from Lake Lillinonah, Bantam Lake (19 pike for 2 anglers, with fish up to 37 inches), Bantam River and Winchester Lake.

Some **WALLEYE** are being reported from Squantz Pond and Lake Saltonstall.

**CHAIN PICKEREL** are being caught at Bashan Lake and Wononskopomuc Lake (60 for one angler, with fish weighing up to 5 lbs).

**CATFISH** – Fair to good reports from Lake Wintergreen (Hamden/New Haven), Black Pond (Middlefield) and Silver Lake (Meriden).

**PANFISH** – This season has been very good. Summer’s winding down, get the family out and experience this fast-paced action. Target the shallows with bobbers and worms, grubs or small shiners, small spinners and jigs have been very productive as well. Smaller local ponds are often great places for panfish, for larger areas, try Bishop Swamp, Halls Pond, Red Cedar Lake, Uncas Lake, Candlewood Lake, Winchester Lake, Dog Pond, Pachaug Pond, Billings Lake, Morey Pond, Gardner Lake, Tyler Lake, Crystal Lake, Stillwater Pond & Park Pond.

**CONNECTICUT RIVER** – The river remains warm and on the low side. Some **STRIPED BASS** are being taken at night in the lower river on live eels and tube & worm but the **BLUEFISH** have taken over much of the flats.

### REMINDER TO ANGLERS-

#### FISHING IN OR CASTING INTO PERMITTED SWIM AREAS IS PROHIBITED.

State regulations prohibit fishing in or into a swim area that’s been permitted by DEEP. Additionally, vessels cannot be operated within a permitted swim area, and there’s a 100 foot “no-wake” zone around the perimeter. Swim areas that have been permitted by DEEP will be marked by white buoys with orange markings, and there should be a permit number posted on the buoys. They may or may not have small orange barrier floats to further demarcate the area. Should questions arise concerning the validity of the swim area (*no permit numbers or the area appears to have been changed/enlarged or keeps moving*), please contact DEEP’s Boating Division at 860-434-8638.



**NORTHERN PIKE** are being found in the coves and in the mainstem near Middletown and Haddam Meadows. Try confluences with rivers and streams. **LARGEMOUTH BASS** has been fair to good in the coves around Hartford-Middletown and in the Haddam area. Catches include some bass in the 3.5 to 4.5 lb range. **SMALLMOUTH BASS** fishing has been good in the Enfield area (50 fish for one angler) area and near the mouth of the Farmington River. **CATFISH** continue to provide excellent action at night on cut bait. Sunfish and locally caught cut bait are being used successfully for them, target outside bends in the river and the upstream side of the deeper holes near structure.

## TROUT

**Lakes & Ponds** – Some lakes are producing some good summer trout fishing. Areas to try include Crystal Lake (Ellington, early/night, 7-8 colors), Coventry Lake (evening over green lights), Mashapaug Lake (25-30 feet), Highland Lake (second basin), Lake McDonough (south end), East Twin Lake (at 35-40 feet), Beach Pond (Big Al's Streamers, tandem, are rocking) and West Hill Pond (25-30 feet).

**Rivers & streams** – Overall, trout fishing was slow last week. Due to the continuing low water levels (see page 5) in some areas and warm water temperatures it is recommended to use extra care handling fish. As the major hatches begin to wind down anglers are advised to include terrestrial fly patterns, they'll produce good results during the day.

**Farmington River** – Flows remain clear and low, currently 91 cfs at Riverton, with the Still River adding an additional 14 cfs. Morning water temperatures are in the low to mid 60's °F, rising through the day, and as you move downstream.

**Hatches/patterns** - The newest addition to the list of Farmington River hatches is the Trico (*Trycorythodes stygiatus*, #22-26, morning 6 am – 10 am). The remaining insects consist of *Ephemerella needhami* (#22-26, early morning), Leadwing Coachman (*Isonychia bicolor*, #12-14, fast water, evening), Blue Wing Olives (*Drunella* sps. & *Baetis* sps.; #18, 22-24, mid-late afternoon), Sulphurs duns (#14-20, morning; afternoon to early evening for spinners), Cahills/Summer (*Stenonema ithaca*, #12-14, early morning), Caddis (tan #16-18, all day; green #22-26, evening; summer pupa, #18-20 morning), Midges (#20-32, morning), Black Ants (#18-20, mid day in fast water), Flying Ants (#18-22, mid day, when windy/humid), Stone Hopper (#8-12, mid day) and Golden Drake (*Anthopotamus distinctus*, #10-14, late evening).

**Housatonic River** – Morning water temperatures are currently in the mid to upper 60's °F (and rising during the day into the mid 70's °F). Flows are clear and low, currently 168 cfs at Falls Village and 342 cfs at Gaylordsville. With these conditions, early and late in the day are the times to target trout.

**Hatches/patterns** - Sulfurs (#12-18 dusk/dark), Blue Wing Olive (#18-24, early morning; spinner fall in evening), Leadwing Coachman (#10-12 evening), Light Cahill (#12-14, evening), and Black caddis (#14-20, early morning & evening). Try Black/Cinnamon Ants (#18-22, mid day in fast water) and Flying Ants (#18-22, mid day, when windy/humid). Fish will focus on ants when they are on the water (after a rain). Don't forget streamers (morning & evening), patterns to try include White, Woolly Buggers, Muddlers, Micky Finn, Grey or Black Ghosts (#4-10). For the most part, the White fly (*Ephoron leukon*, #12-14, dawn & dusk) hatch is over.

**Anglers are reminded that the thermal refuge areas on the Housatonic, Naugatuck and Shetucket Rivers are closed to fishing as of June 15. These areas will reopen on September 1. There is no fishing within 100 feet of the mouths of posted tributaries to these rivers.**

## ATTENTION ANGLERS –



- Maps of all of the state's trout streams and rivers showing the many stocking and access points are now available online at [www.ct.gov/deep/troutstockingmaps](http://www.ct.gov/deep/troutstockingmaps).
- Bathymetry maps are now available online at [www.ct.gov/dep/lib/dep/fishing/general\\_information/lakebathymetrymaps.pdf](http://www.ct.gov/dep/lib/dep/fishing/general_information/lakebathymetrymaps.pdf)

## NOTES & NOTICES:

- ❖ **WYASSUP LAKE** (impossible to launch) remains drawn down for dam repairs.
- ❖ **GREEN FALLS RESERVOIR** has been drawn down 15 inches to facilitate ongoing dam repairs in the Pachaug River system. The **pond remains open to fishing and car top boating access**, although the swimming area has been closed.
- ❖ Anglers on the **SALMON RIVER** should be aware that the current work in the Lyman Viaduct (Colchester) reconstruction project on Dickinson Creek, which includes filling in a large scour hole below the twin culverts and restoring fish passage (after 50+ years), may at times cause some noticeable turbidity, including in the Salmon River downstream of Dickinson Creek.
- ❖ **COLEBROOK RIVER LAKE** – Due to low water levels, anglers and boaters should check the USACE Colebrook River Lake website at [www.nae.usace.army.mil/recreati/crl/crlhome.htm](http://www.nae.usace.army.mil/recreati/crl/crlhome.htm) or call the Colebrook River Lake office (860-379-8234) for updated information concerning status of the boat launch.
- ❖ **LAKE ZOAR** – A water ski clinic for individuals with disabilities is scheduled for Saturday, August 25, in the upper end of Lake Zoar. This event run from 9 am to 4 pm, and boaters are asked to take care when passing through this area (marked by buoys) of the lake, and avoid interfering with the event.
- ❖ **HIGHLAND LAKE** - A canoe/kayak race and swim event is scheduled for Saturday, August 25, at Highland Lake from 8 am to 1 pm. This event will be held in the north bay at Resha and Holland beaches in the vicinity of the state boat launch. Boaters should use extra care when accessing the lake from the state launch.
- ❖ **LAKE LILLINONAH** – We have received a number of inquiries from anglers about the status of the Route 133 (Steel Bridge) boat launch. The renovations scheduled for this launch won't occur until sometime in 2013, and the launch remains open for use until the project begins.

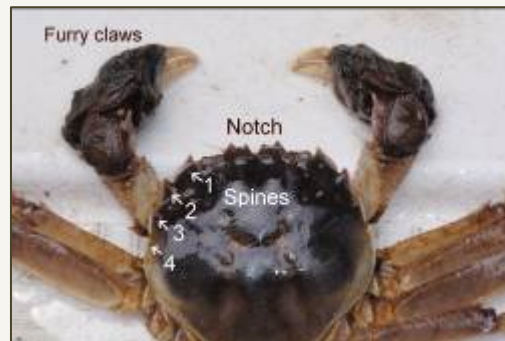
### CHINESE MITTEN CRAB RECENTLY FOUND IN CONNECTICUT:

DEEP and Connecticut Sea Grant recently confirmed that a juvenile Chinese mitten crab (*Eriocheir sinensis*) was found in Connecticut waters. The crab was collected from the Mianus Pond fishway on the Mianus River (Greenwich) and is the first confirmed sighting of this invasive crab in this state.

Where abundant, Chinese mitten crabs can damage fishing gear, clog pumps and intake pipes, cause riverbank erosion through their burrowing activities and outcompete native species for food and habitat. These crabs are relatively new to the Atlantic coast, however, and at this time it is unclear as to what their effects will actually be here.

Adult Chinese mitten crabs have several distinctive characteristics that aid in identification:

- Claws are of equal size.
- "Furry" claws with whitish tips.
- Brown to green carapace, four spines (the fourth can be small) on each side.
- Notch between the eyes.
- One of only a few crabs that would be found in freshwater in the Northeast.

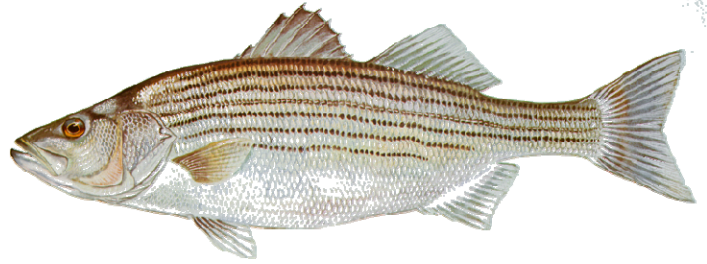


(Image courtesy of the Smithsonian Environmental Research Center)

Individuals finding a crab that they suspect to be a Chinese mitten crab should keep the crab on ice or freeze it (please do not release the crab), note the exact location it was found, and contact DEEP Marine Fisheries (860-434-6043), DEEP Inland Fisheries (860-424-3474) or CT Sea Grant (Nancy Balcom, 860-407-9107).

An excellent website for more information on Chinese mitten crabs (and other marine invasions) is the Smithsonian Environmental Research Marine Invasions Lab website:

[www.serc.si.edu/labs/marine\\_invasions/index.aspx](http://www.serc.si.edu/labs/marine_invasions/index.aspx)



## MARINE FISHING REPORT

---

Surface water temperatures in Long Island Sound (LIS) are in the low to mid 70's °F. Check out the web sites listed below for more detailed water temperatures and marine boating conditions and see page 5 for some recent water quality information.

<http://www.mysound.uconn.edu/stationstat.html>

<http://www.ndbc.noaa.gov/>

[http://marine.rutgers.edu/mrs/sat\\_data/?nothumbs=1](http://marine.rutgers.edu/mrs/sat_data/?nothumbs=1)

<http://www.wunderground.com/MAR/AN/330.html>

**BLUEFISH** are thick throughout LIS with fish ranging in size from about 4 to 12 lbs. Bluefish have been providing anglers great surface action at first light especially at "The Race" which has been "red hot". The downside is that with all the bluefish around it's making it tough for anglers seeking **STRIPED BASS**. The night time shift is now in order for pursuing trophy linesiders and evading large chopper blues. Live lining bunker, eels, or scup again is the choice for slob bass. The usual fishing spots for both stripers and bluefish include the reefs off Watch Hill, Ram Island Reef, Thames River, Plum Gut, Pigeon Rip, Little Gull Island, outer Bartlett Reef, Black Point, the "humps" south of Hatchett Reef, lower Connecticut River, Long Sand Shoal, Cornfield Point, Southwest Reef including outer SW Reef, Six Mile Reef, the reefs off Madison, Guilford, and Branford, Falkner Island area, Charles Island area, lower Housatonic River, buoys 18 and 20 off Stratford Point, Stratford Shoal/Middle Ground, Penfield Reef, the reefs around the Norwalk Islands, and Cable and Anchor Reef.

**SNAPPER BLUEFISH** fishing remains good to excellent in the tidal rivers. This is a great time to introduce kids to fishing since the action is fast and furious! Light freshwater spinning gear is all you need.

**SUMMER FLOUNDER** (fluke) fishing still remains on the slow side but some nice keepers can be caught in deep (100+ ft) water.

**SCUP** (porgy) fishing remains good to excellent on the major reefs and rock piles with fish measuring 14 to 17 inches.

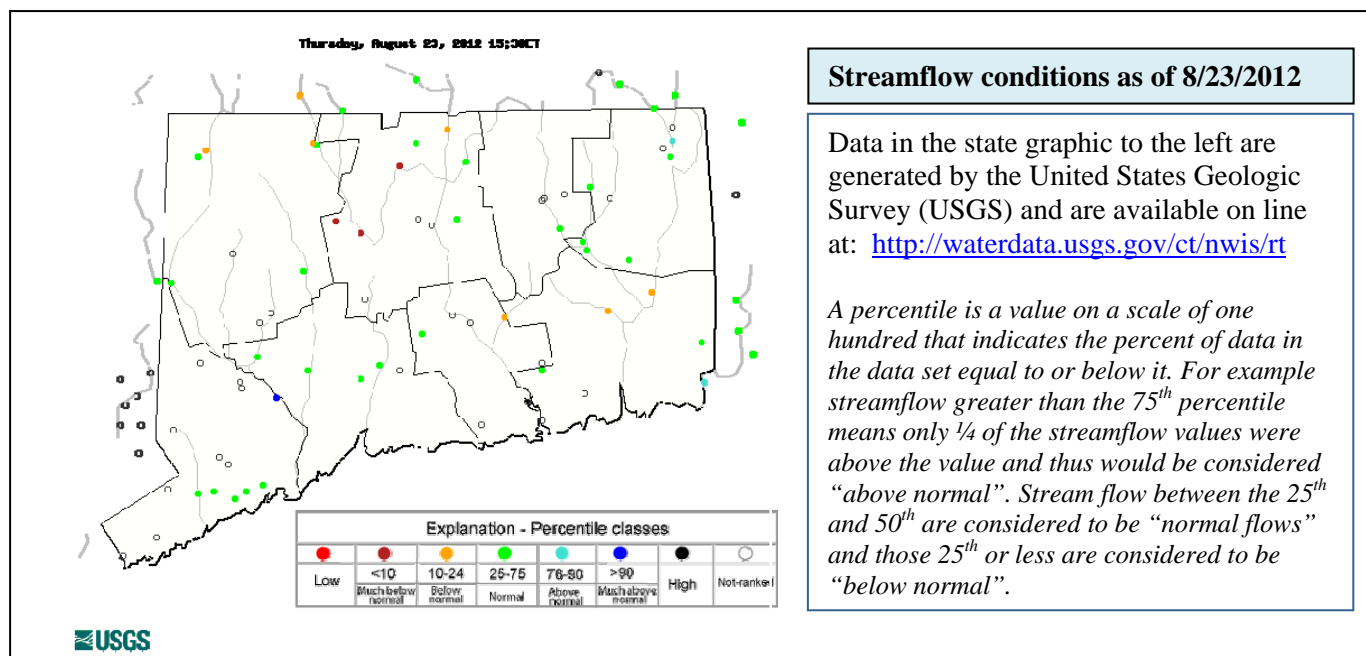
**BLACK SEA BASS** fishing is good to excellent on the deep water reefs, wrecks, and over hard gnarly bottom.

Be on the lookout for **LITTLE TUNNY** and **ATLANTIC BONITO** on the south side of Fishers Island, the Race, Little Gull Island, Pine Island off the Thames River, Jordan Cove over to Millstone Point, and Sixmile Reef. These torpedoes can cover a large area in a nanosecond!

**BLUE CLAW CRABBING** is prime time in the tidal creeks!

**For Current Connecticut Recreational Fishing Regulations:** Anglers should consult the 2012 Connecticut Anglers Guide which is now available at most Town Clerks Offices, DEEP offices and at tackle stores selling fishing licenses. Anglers can purchase their fishing licenses online ([www.ct.gov/deep/fishinglicense](http://www.ct.gov/deep/fishinglicense)) or at participating town halls, DEEP field offices and fishing tackle vendors. Current regulations, electronic versions of the Angler's Guide and additional information can all be accessed on the DEEP website at: [www.ct.gov/deep/fishing](http://www.ct.gov/deep/fishing).

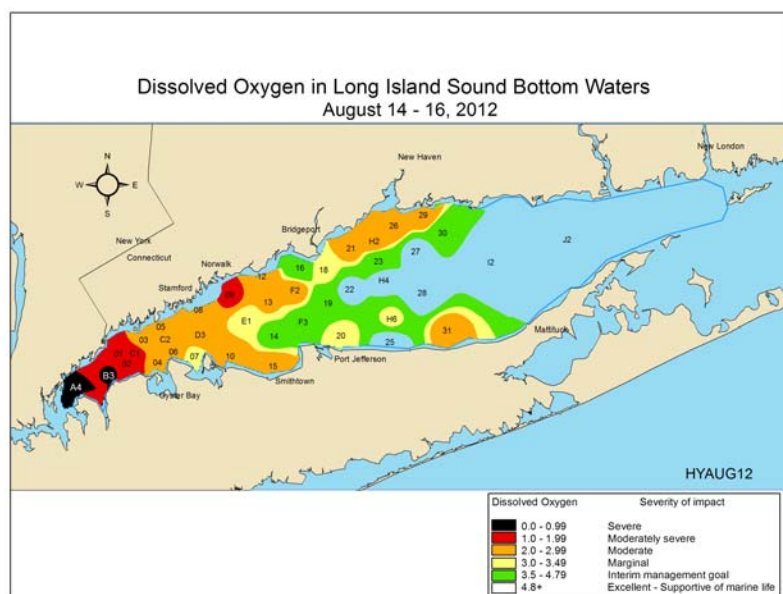




### CT DEEP LONG ISLAND SOUND WATER QUALITY MONITORING:

[http://www.ct.gov/dep/cwp/view.asp?a=2719&q=325570&depNav\\_GID=1654](http://www.ct.gov/dep/cwp/view.asp?a=2719&q=325570&depNav_GID=1654)

Monitoring of dissolved oxygen levels as well as other water quality parameters are the responsibility of the Long Island Sound Water Quality Monitoring Program within the Bureau of Water Protection and Land Reuse. The amount of oxygen in the water at the bottom of LIS is important for the survival and reproduction of a variety of organism which reside there. Examples include, flounder, fluke, lobster, crab, worms, clams, oysters, and other shellfish. Hypoxia is a condition of low dissolved oxygen concentrations in the waters of Long Island Sound that impacts up to half of the Sound's waters each summer. The primary cause of hypoxia is nitrogen enrichment that comes from a variety of sources throughout the Long Island Sound watershed, in particular sewage treatment plants, stormwater runoff and atmospheric deposition.



The Connecticut Department of Energy & Environmental Protection is an Affirmative Action/Equal Opportunity Employer that is committed to requirements of the Americans with Disabilities Act. Any person with a disability who may need information in an alternative format may contact the agency's ADA Coordinator at 860-424-3194, or at [deep.hrmed@ct.gov](mailto:deep.hrmed@ct.gov). Any person with limited proficiency in English, who may need information in another language, may contact the agency's Title VI Coordinator at 860-424-3035, or at [deep.aao@ct.gov](mailto:deep.aao@ct.gov). Any person with a hearing impairment may call the State of Connecticut relay number - 711. Discrimination complaints may be filed with DEEP's Title VI Coordinator. Requests for accommodations must be made at least two weeks prior to any agency hearing, program or event.

### DEEP WEEKLY Fishing Report



#### Connecticut Department of ENERGY & ENVIRONMENTAL PROTECTION

79 Elm Street, Hartford, CT 06106

[www.ct.gov/deep](http://www.ct.gov/deep)

Striped bass image courtesy Duane Raver/USFWS.